

HV JUICE

**hauff
technik**



**HAUFF
TECHNIK
P. 3**



This Issue

**TESTO THERMAL
IMAGING CAMERAS**

PAGE 2

**STREETLIGHT
CONNECTIONS**

PAGE 4

INLINE DISCONNECTS

PAGE 6

100% NEW ZEALAND



**CABLE
JOINTING
TOOLS**
PAGE 7



Testo's Thermal Imaging Cameras are world renowned as being some of the best in terms of quality and usability. Boasting custom-built lenses, Testo Thermal Cameras are manufactured in Germany with the immaculate build quality associated with German engineering.

From heating engineers checking blocked radiators and underfloor heating malfunctions, to production engineers checking their process line equipment is running effectively, thermal imaging cameras provide an instant and contactless diagnosis that no other technology can offer. Testo Thermal Imaging Cameras can be used for a broad range of applications across a number of different industries.

FEATURES

SuperResolution

Capture high-resolution infrared images with your Testo thermal imager. SuperResolution technology improves the thermal imager's usable resolution by a factor of 1.6 – with four times as many measuring values. Detect building damage, inadequate insulation, and other thermal irregularities in industrial components and products.

Testo Thermography App

With the Testo Thermography App your smartphone or tablet becomes a second display, and a remote control for your thermal imager. In addition to this, you can use the App to create and send compact reports on site, and to save them online. Download for Android or iOS now free of charge.

Testo ϵ -Assist

For precise thermal images, it is important to set the emissivity (ϵ) and the reflected temperature of the object being examined in the imager. Previously, this was complicated, and with regard to the reflected temperature, less than accurate. Testo ϵ -Assist changes this: simply attach one of the reference stickers included in delivery to the measurement object. Via the integrated digital camera, the thermal imager recognizes the sticker, determines the emissivity and reflected temperature and sets both values automatically.

Thermal Imaging Trainings

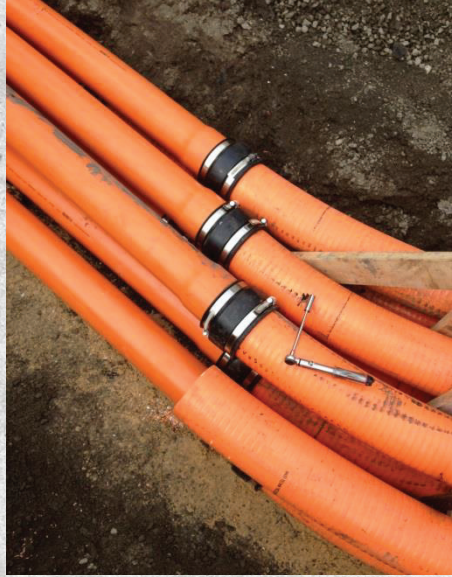
We are able to arrange training on products from our Testo range on request so that you can discover their features and make the best use of your thermal imaging camera. Please contact us for more info.



NEW AGENCY



HSI150 & HSI90 wall inserts mounted in formwork



Joiner between rigid and Hateflex flexible conduit



Hateflex flexible conduit 5.3m lengths

ALWAYS.
RELIABLE.
TIGHT.



Connection of Hateflex flexible conduits using KES150-D system cover



HSI150 & HSI90 wall inserts mounted in formwork

PROJECT DESCRIPTION

Engineers continue to roll out Hauff-Technik systems to protect their assets. Aware of the costs of pumping contaminated water out of cable pits, they specified Hauff-Technik sealing systems to seal their kiosk substation pits at Quay Apartments in Docklands, Australia. They also specified Hauff-Technik systems in order to give longer life to substation equipment damaged from moisture raising up from cable pits into the substation.

INSTALLED PRODUCTS

- HSI150K2 Wall insert 300mm thick
- HSI90K2 Wall insert 300mm thick
- KES150-D system covers
- KES90-D system covers
- Hateflex 14150 flexible conduits 5m lengths
- Hateflex 14090 flexible conduits 5m lengths
- KES-M150-M140
- KES-M90-WE-1/50
- KES-M90-WE-1/63



hauff-technik

Contact us now for more info or check out the range here:





SOLAR LED STREET LIGHT KIT - 20W

These 20W LED street light kits deliver exceptional performance while substantially reducing operational costs. The cutting edge Luxtella LED luminaire is one of the most efficient on the NZTA M30 list where its 2,500 lumen output is generated from just 19.5W, and replaces the traditional 70W SON street light.

The design also incorporates excellent optical design and light distribution, and you can choose from two visually appealing luminaire designs. These kitsets are complete with all components required to commission the streetlight.

The battery is discreetly hidden away in a compartment near the top of the pole keeping it out of harm's way.

KITSET COMPONENTS

- 20W LED Street Light
- 115W Solar Panel
- 1x Lithium-ion battery (950Wh)
- 20A controller
- 5m Galvanised Steel Pole (Flange mounted & includes anchor bolts)



APPLICATIONS

Perfect for locations where mains power is not currently available, pedestrian and cycle paths, parks and reserves, public areas such as shopping precincts, outdoor carparks etc.

Cat No.	LEDSOLAR-ST20ECO	LEDSOLAR-ST20XPL
LUMINAIRE	TNL0729-20DC12	S12XPL-20DC-GRN0
LUMINAIRE POWER	20W	20W
LUMINAIRE INPUT VOLTAGE	12V DC	12-24V DC
LUMINAIRE WEIGHT	4KG	4KG
LUMINAIRE DIMENSIONS	500 X 278 X 122MM	488 X 275 X 82MM
COLOUR TEMPERATURE	5700K	4000K
LUMENS	1980	2500



FD150-1-NZ SINGLE PHASE STREETLIGHT CUTOUT

This Charles Endirect cutout is designed to be strong, durable, easy to install, and meets the full requirements of BS 7654. Featuring a secure and quick release carrier to provide safe and easy access to fuses and outgoing terminals.

With safety at the forefront of the design process, the special cam operated fuse handle ensures electrical disconnection is achieved before the unit is opened and the fuse carrier extracted.

TECHNICAL SPECIFICATIONS

- Single pole isolation
- Single fuse (BS 88 Part 1, AC 16 tag type)
- 25A max fuse rating
- Electroplated brass terminals with serrated bores for better cable retention
- PVC grommets at cable entry points
- Designed and tested in accordance with BS 7654: 1997
- Outgoing cables exit below horizontal to ensure drip loop is formed
- IP22 rated
- Sealing wire facility
- Max cable size is 10mm²

*Two pole double fuse option available

MAINS STREETLIGHT PIT SYSTEM

- Submersible Fused Electrical Supply To Light Poles

The Streetlight pit is a submersible cable break out system with fused supply to light poles and auxillary items such as CCTV, WiFi, telecom signal boosters . This pit system is approved by Auckland Transport for all Streetlight poles where the "Gear Door Opening size" is less than 120mm x 200mm, or where there is limited space for cable loops and multiple fused supplies within the streetlight pole.

SYSTEM

Fully submersible pit system designed specifically for New Zealand applications.

PIT

- Dimensions: 300x300x300mm
- Colour: Grey
- Material: Polypropylene / UV Stable
- Breaking Load: 4.8kg/cm²
- Security: 4x Torx Stainless Steel Anti-tamper Screws

ELECTRICAL

- Connections: Via 165A rated Copper Bus
- Fuse Holders: 65U Fully Submersible Fuse Carrier (Range taking 2.5mm² - 16mm²)
- Fuses: 10x38mm Barrel Type
- Sealing of Connections: Raychem Gel Enclosure (GHFC-2.5-90)
 - Easy Re-entry
 - Rugged Protection
 - Submersible



COMPLETE EARTH FOR STREETLIGHT POLES

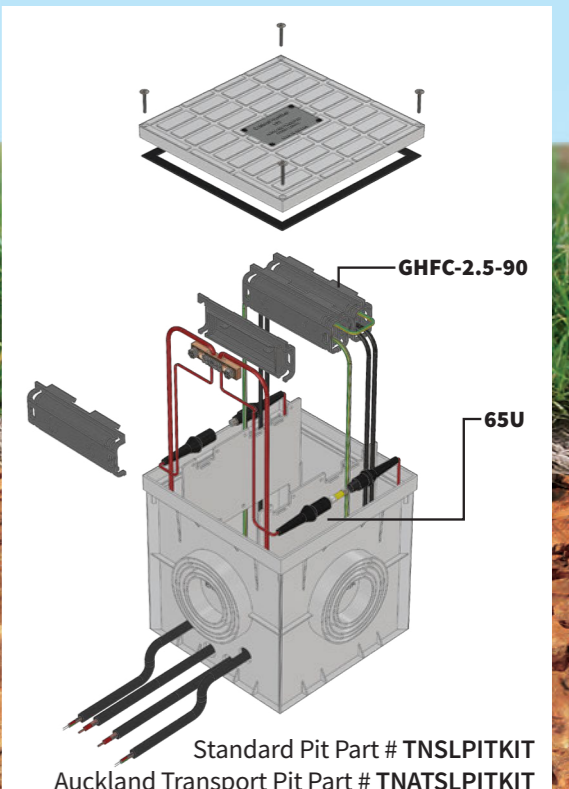
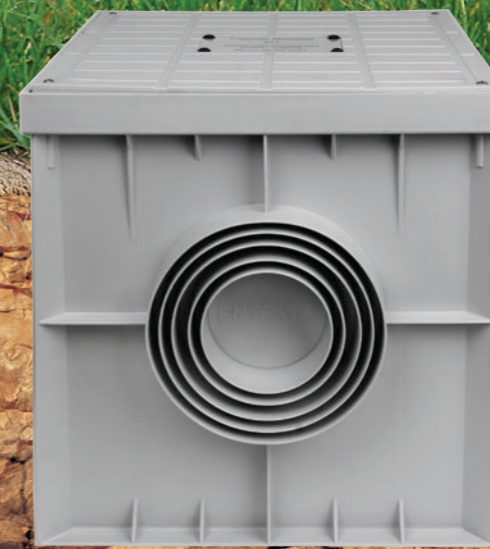
TNSLGR3 FEATURES

- 13mm copper bonded rod
- Pre-welded
- 3m of 10mm² cable attached
- Cadweld and copper conductor included
- Able to be buried
- Position of the weld allows driving tip
- Room under ground for connection
- ERICO rod 1840mm long



PICTURED WITH
#TNERIB EARTH ROD
INSPECTION BOX &
#TNEARTH TAG
(NOT INCLUDED)

Product # TNSLGR3
ERICO





The LineBOSS™ Sidebreak switch is the most robust, yet elegant sidebreak switch in the market today.

Every LineBOSS™ component brings meaningful operator benefits for years to come. Features such as 1/4 inch steel phase base, stainless steel to brass bearings, silver plated copper reverse loop contacts and busbar blades mean efficient and smooth operation over a very long life; even in hostile environments where dust, humidity, corrosives and other industrial or natural contaminants play havoc with most. You'll be amazed at how much switch you can buy for the money. LineBOSS Unitised Sidebreak Line Switches are A.N.S.I., IEEE and I.E.C. rated and are offered in 15.5 kV, 25.8 kV & 38.0 kV. With continuous current ratings of 600, 900 and 1200 amps, they are available in wide range of options and configurations, and can be engineered to customer-specific construction and operational needs.



inertia
ENGINEERING



STANDARD FEATURES

- Resilient, higher BIL silicone rubber insulators
- Reverse loop silver plated copper jaw contacts
- Maintenance free stainless steel/brass bearings
- Unitised construction: aluminium, steel or fibreglass
- Factory adjusted, ready to mount
- Meets all applicable IEEE, IEC and ANSI standards
- All ferrous components are hot dip galvanised
- Tinned copper terminal pads

STANDARD CONFIGURATIONS

- Horizontal (upright)
 - Horizontal (centre mount)
 - Vertical (tiered outboard)
 - Vertical (Phase over phase)
 - Horizontal (underarm)
 - Riser
 - Delta (pole top)
- Hotstick and motor operated option available.

LOADBREAK DEVICES

- Arc Horns
- Quickbreak Whip Attachments
- Arc Chute Load Break
- AmpRupter Load Break
- AmpVac Load Break
- ACCC Designation DO6 Loadability factor 1.22 at 25°C

OPTIONAL FEATURE – THERMAL DIFFUSION GALVANISING

TDG is a significant advancement over conventional hot-dip galvanising. It employs a method of applying a uniform, sacrificial zinc-iron alloy utilising a metallurgical vapor diffusion process tested to ASTM 1059. As a "green" technology, TDG substantially outperforms conventional mild steel protection, without the environmental impacts of other processes. Applying the TDG process to critical ferrous components provides corrosion protection unmatched by any other outdoor switchgear.



Tested in accordance with IEEE Std. C37.34-1994 ANSI/IEEE Std. 37-71-1984 and IEC Std. 265-1, 1983.



TE has compiled these MV cable jointing tool kits to assist cable jointers in preparing cables for use with Raychem cable accessories. These kits offer the highest quality tools designed specifically for use with New Zealand MV cables.



Cat No.	Description
3-361372-1	BASIC MV CABLE PREPARATION TOOL KIT

3-361372-1 BASIC KIT

- Semi-Con scoring Tool (easy peel)
 - Cable Range 8-45mm OD
 - Easy and precise blade depth adjustment from 0-4mm (0.05mm increments)
 - Calibrates circumferential cut to ensure no step in semi con
 - Able to perform spiral & longitudinal cuts
 - Compact for ease of use on 3core cables
- Outer sheath / Insulation stripper
 - Cable Range 15-50mm OD
 - Strips outer sheath (single core cable) & core insulation
 - Can cut insulation up to 10mm thick
 - 3 settings, 1 & 2=autofeed, 0=square cut
- Heavy duty sheath stripper
 - One cutter for all plastic cable sheaths
 - Adjustable cutting depth control



Cat No.	Description
3-361372-0	ULTIMATE MV CABLE PREPARATION TOOL KIT

3-361372-0 ULTIMATE KIT

Contains the 3-361372-1 basic kit contents PLUS:

- Semi-Con shaving Tool (bonded)
 - Cable Range 18-60mm OD
 - Accurate removal within 25mm of outer sheath cut & within 7mm when in reverse
 - Blade depth altered in 0.1mm increments
 - Thumb switch transitions between spiral & square shave without additional stop
 - Ball bearing rollers mean no need for grease
- Chamfering Tool
 - Cable Range up to 60mm OD
 - Simple and easy to use
 - Creates rounded chamfer on insulation for installation of push on terminations



Cat No.	Description
CSTE	TE HYDRAULIC SPIKER UP TO 11KV PVC SHEATHED CABLES

HYDRAULIC CABLE SPIKER KIT

The CSTE hydraulic cable spiker is designed for use on single and three core mains cable up to 11kV. Intended to prove that a selected cable, previously disconnected, is in fact dead before site work commences.

- Does not require an explosive cartridge
- Robust design
- Suitable for up to 102mm overall diameter cable
- Independent insulated earth supplied 6m x 50mm²
- Fully insulated 6m hydraulic hose
- Packed in robust storage case with humidity control
- Diamond shaped chisel head
- Spike depth indicator helps achieve correct penetration every time



TE Porcelain Insulators

25 Year Warranty



TransNet New Zealand Ltd

Auckland

78 Cryers Road
East Tamaki
Auckland
NEW ZEALAND
Ph 0800 442 182
Fax 0800 442 183
PO Box 39 383
Howick, Auckland

Wellington

10 Petone Ave
Petone
Wellington
NEW ZEALAND
Ph 04 576 2530
Fax 04 576 0040
PO Box 39 383
Howick, Auckland

NEW ZEALAND

sales@transnet.co.nz

TransNet Tonga

Ma'ufanga

Small Industries
Ma'ufanga
TONGA
Ph +67 627 939
Fax +67 627 976
PO Box 2932
Nukualofa

TONGA

transnet@kalianet.to

TE Connectivity offers a 25 year warranty on manufacturing defects for its TE Branded 11kV – 66kV porcelain insulators.

In the event that a porcelain insulator is found to demonstrate manufacturing defects, TE will supply a comparable replacement product free of charge.

To learn more about this offer please contact us.



TransNet NZ Ltd has made every reasonable effort to ensure the accuracy of this information and it is to the best of our knowledge correct and reliable. Under no circumstances does this constitute an assurance of any particular quality or performance and users should independently evaluate the suitability of products for their desired application. All information in this publication including pricing, drawings, illustrations, images and graphic designs are reflections of our current understanding. TransNet NZ Ltd reserves the right to make any adjustment to this information at any time. Our liability for the products outlined in this publication is set forth in our standard terms and conditions of trade. In case of any potential ambiguities or questions, please contact us for clarification.



NEW ZEALAND OWNED